

Cultural Landscape Lower Weser



Schiffahrtsmuseum
Unterweser



Lock

Am Schleusendeich - 26919 Brake

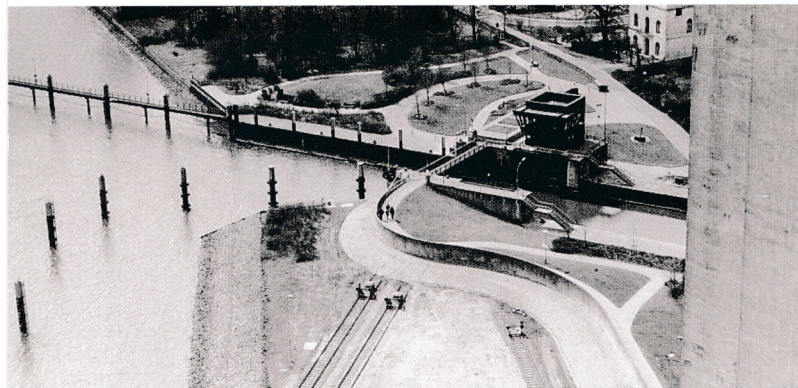
53° 19.735'N - 8° 29.146'E



Lock Am Schleusendeich 26919 Brake

Schiffahrtsmuseum
Unterweser

The floodgate lock of Brake connects the sea harbor – the Stromkajen – to the inland harbor. In the past, this very point served as the entry into the “Braksiel”, which was utilized as a protected moorage for small vessels, prior to its subsequent use as an expanded harbor basin. Already as early as the beginning of the 19th century, the space for mooring was extraordinarily limited, given that the ships of the Imperial Navy overwintered here. On the 29th of October 1861, the first ship passed through the floodgate in Brake. In 1980, the facility was modernized to serve as a chamber lock independent of the tides and with the ability to protect against storm surges.



GEFÖRDERT DURCH

oldenburgische
landschaft



MIT MITTELN
DES LANDES
NIEDERSACHSEN

 LzO

Regionale Stiftung
Gutes tun